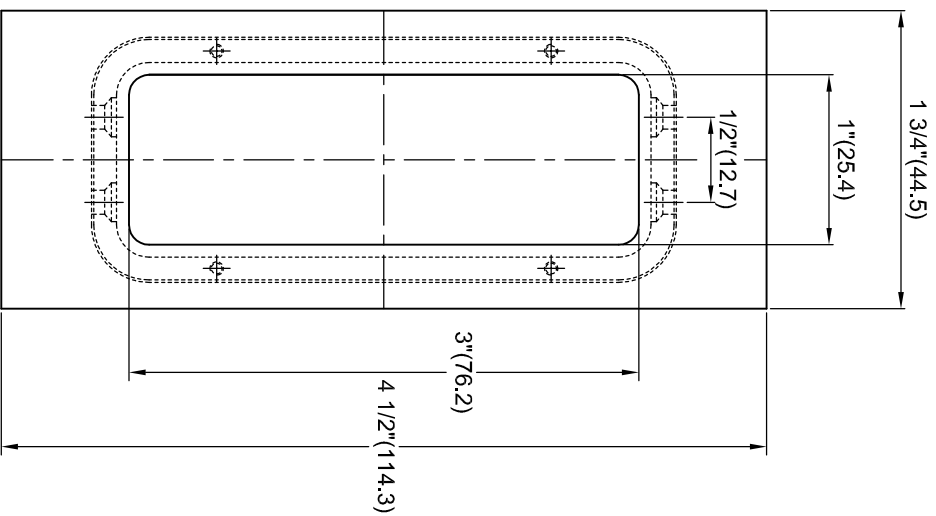
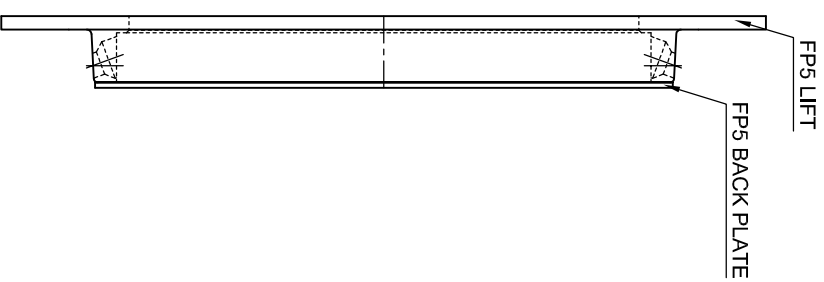
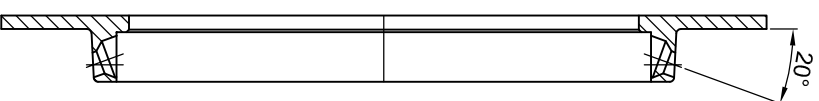


INSTALLATION INSTRUCTION

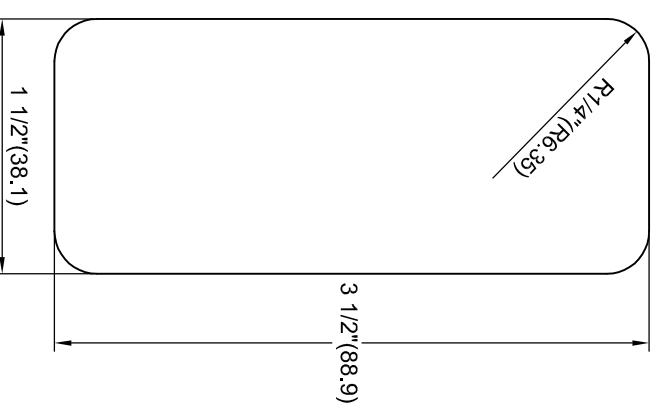
INSTRUCCIONES DE INSTALACION



FP5 LIFT



ASSEMBLY



DEPTH IN DOOR HOLE .375

Screw: 4#-24 X 4
Metric Millimeters in Parenthesis



| | |
|-----------------|----------------|
| FP5 PULL | Rev. A |
| DWG# : FP5, FP7 | DATE : 5/10/12 |
| MAT'L : BRASS | |