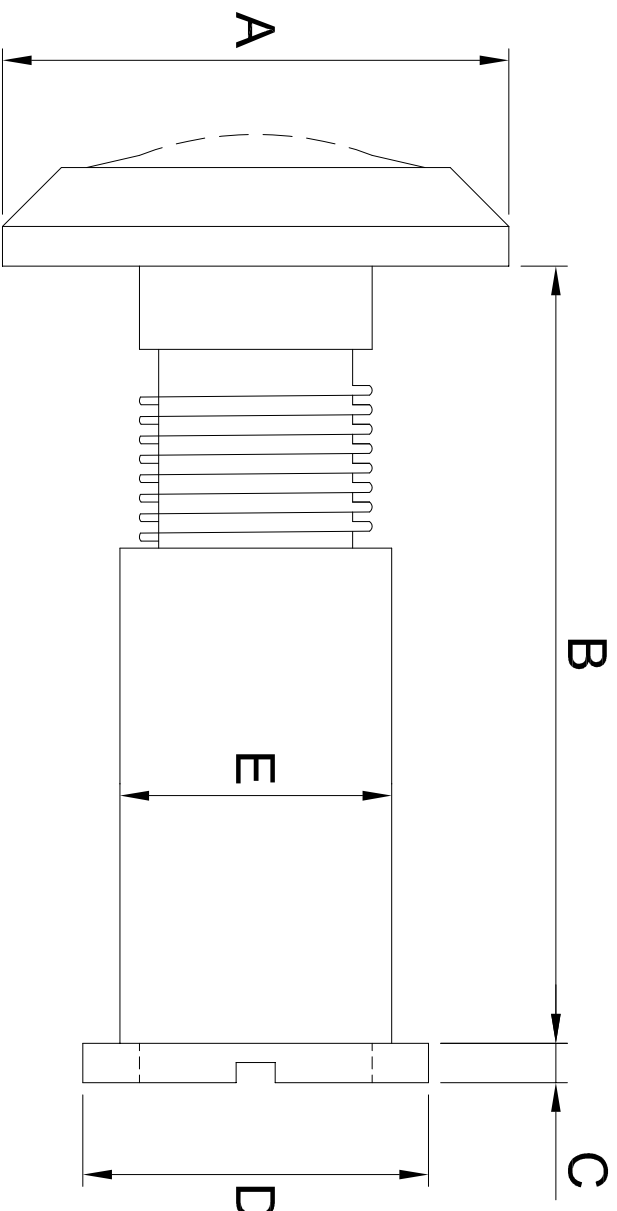


INSTALLATION INSTRUCTION

INSTRUCCIONES DE INSTALACION



	A	B	C	D	E
DV1	0.625	1.230-2.162	0.080	0.570	0.470
DV2	0.625	1.930-2.750	0.080	0.570	0.470
DV3	1.025	1.300-2.125	0.080	0.700	0.550
DV4	0.625	0.750-1.250	0.080	0.570	0.470



DV1,DV2,DV3,DV4,DV5

DWG#: DV

Rev. A

MAT'L : BRASS

DATE : 16/11/21